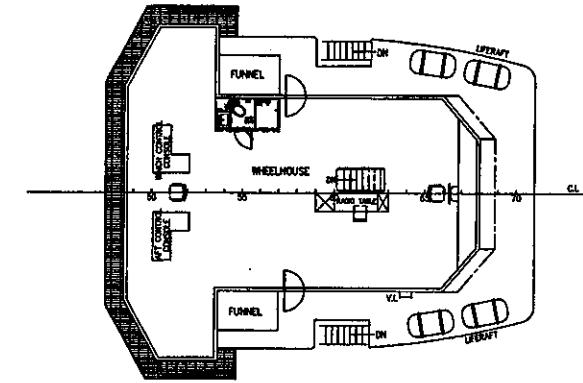
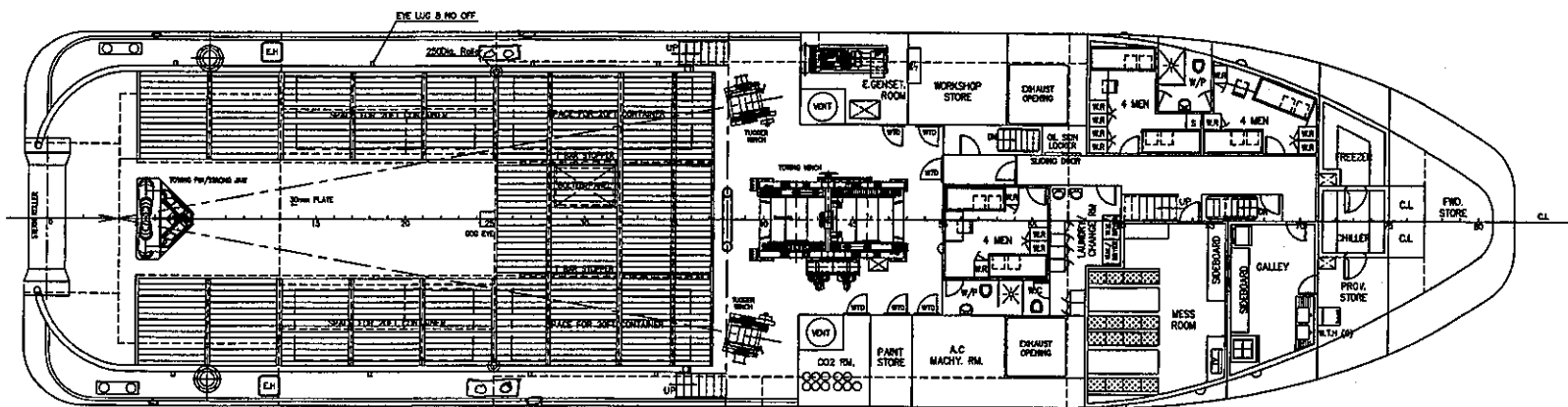


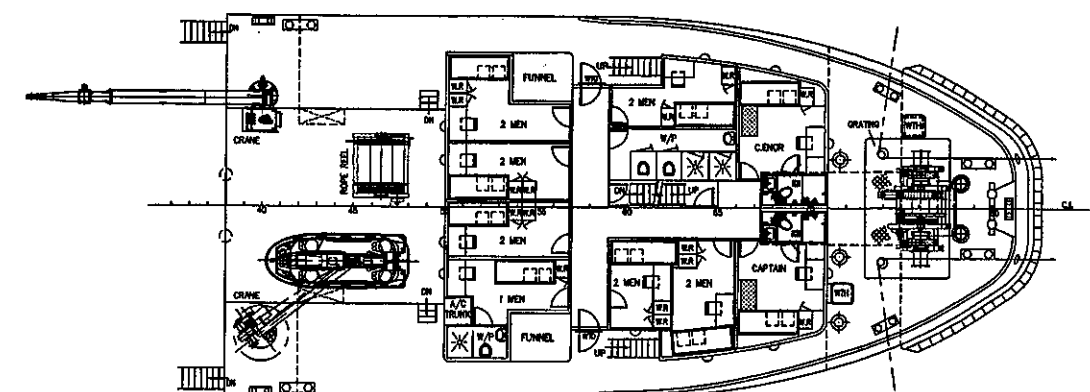
OUTBOARD PROFILE



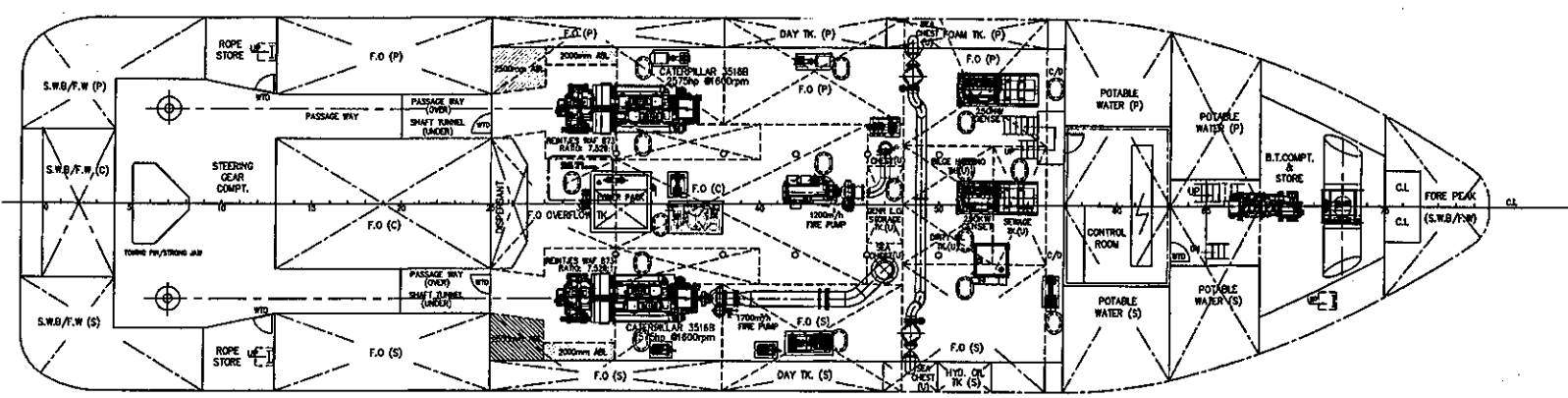
WHEELHOUSE DECK



MAIN DECK



FORECASTLE DECK



BELOW MAIN DECK

PRINCIPAL PARTICULARS

LENGTH O.A.	49.95m
LENGTH W.L.	48.60m
LENGTH B.P.	43.60m
BEAM MLD.	12.60m
DEPTH MLD.	5.75m
DRAFT DESIGNED	4.50m
COMPLEMENT	27 MEN
F.O.(include oil recovery)	500 m ³ (approx.)
POTABLE WATER	242 m ³ (approx.)
S.W.B.	65 m ³ (approx.)
OIL RECOVERY (flashpoint above 60°)	126 m ³ (approx.)
FOAM TANK	18 m ³ (approx.)
DISPERSANT TANK	19 m ³ (approx.)



14/10/10

DATE	MODIFICATION	REV	BY
SHIP: 50m A.H.T./TOWING TUG			
TITLE: GENERAL ARRANGEMENT			
OWNER	SHIM YANG SHIPYARD SDN BHD	YARD NO.	313
CLASS	BY		
CONAN WU & ASSOCIATES NAVAL ARCHITECTS			
INFORMATION BLDG. 8 INTERNATIONAL BUSINESS PARK, ARBONN EAST, SINGAPORE 608914 TEL: (65) 6362-1138 FAX: (65) 6362-1236 (65) 6362-0723 E-MAIL: mwl@conanwu.com.sg			
DRAWN	CHEKED	APPROVED	SCALE
DAL	CHUA		DRAWING NO.
27.01.08	27.04.08		1:125 C4420/G-1 B

THIS DRAWING AND THE INFORMATION CONTAINED HEREIN ARE SUPPLIED ON THE UNDERSTANDING THAT THEY ARE THE EXCLUSIVE PROPERTY OF CONAN WU & ASSOCIATES. THEY MUST NOT BE USED OR REPRODUCED IN WHOLE OR IN PART WITHOUT PERMISSION BY WRITING.